

## Nema Pro

### BIONEMATICIDE

#### Introduction

Nema Pro is a breakthrough in biological control of economically damaging nematodes, It is bacteria-based (non-living) active ingredient possesses true nematicidal activity against eggs, juveniles and adult nematodes, root knot, dagger, stunt, reniform and soybean cyst nematodes. We offers growers a new choice in a dwindling selection of nematode management tools: broad spectrum, exempt from residue tolerances, for conventional & organic production. Thereby, promoting stronger, healthier roots and more robust yields.



#### Composition

ACTIVE INGREDIENT: Paecilomyces lilacinus, other ingredient  
Bacteria count  $2 \times 10^8$  CFU/g , powder type, 1 kg per foil bag

#### Common Crops

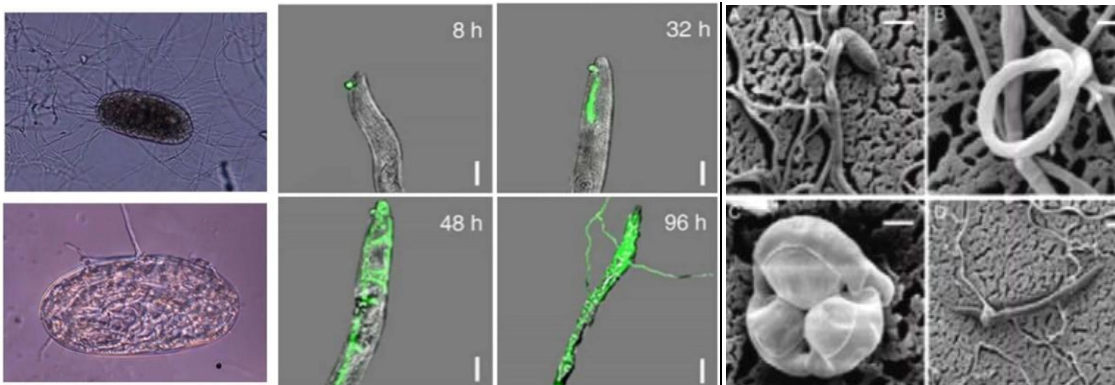
- Corn
- Tobacco
- Potatoes
- Blueberry
- Strawberries
- Leafy beans
- Cucumbers
- Cotton
- Fruiting vegetables

## Nematode and wireworm control

- Root Knot
- Leison
- Dagger
- Stunt
- Cyst
- Ring

## Mode of Action

- ✓ Bacteria-based active ingredient that kills nematodes
- ✓ Posited multi-site mode of action against eggs and juveniles
- ✓ Activity by contact, ingestion and exposure
- ✓ Internal plant response
- ✓ Broad spectrum activity against many nematode
- ✓ species that also affects certain soil arthropods



## Benefit:

- Broad spectrum suppression & control of
- Economically damaging soil insects & nematodes
- Protect crop from yield loss
- Can increase yields and harvest quality
- Promoting stronger, healthier roots
- Can be used at planting or post planting
- Zero residues, can be used in organic production

## Dosage & Method

During planting, apply 1.5 gram /square meter, base on nematode situation.

Reapply every 28 days for season-long control

During cultivation, apply 1.5 gram /square meter as a lay by application incorporating the spray into the soil profile.

Cultivation applications should only be used as a supplemental treatment following an in-furrow application.

## Result



Control



Treated

## Packing and shelf life

2 year shelf life, 1 kg per foil bag, 10 kg per carton

## Storage

Store in cool and dry, keep out of direct sunshine and moisture. Keep out of reach of children.